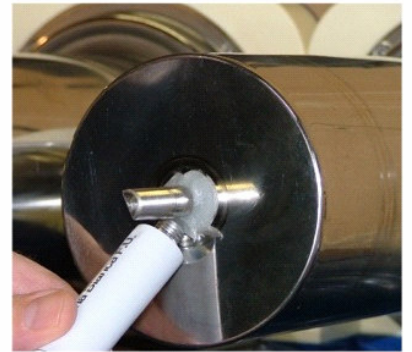


Weekly Cleaning & Lubrication Instructions

- Let frozen drinks thaw as much as possible, drain into mixing jugs and put in cooler.
 - Carefully remove lids, clean and put in a safe place.
- Fill bowls with warm water, wait until any frozen drink has thawed and drain completely.
 - Turn off main power switch at top left of switch panel.
- Remove bowls, augers and bowl gaskets and take to sink for cleaning.
- Disassemble remaining parts and wash everything with mild detergent and soft cloth.
 - DO NOT USE ABRASIVES OR HARSH CHEMICALS!**
 - Towel dry bowls with soft cloth only. Remaining parts can air dry.
 - Reassemble machine and grease the 3 lubrication points as shown.

Apply a 1/4" thick ring of grease around shaft. →



← Put about 1/2" of grease on finger and apply on top of o-ring.

Put about 1/2" of grease on finger and apply a thin film to inside of bowl to allow smooth assembly over bowl gasket. →



To order products or for service contact:

Great Lakes Beverage Distributors, LLC

616.802.4916 Cell

877.GL.SWIRL

www.greatlakes-swirl.com